

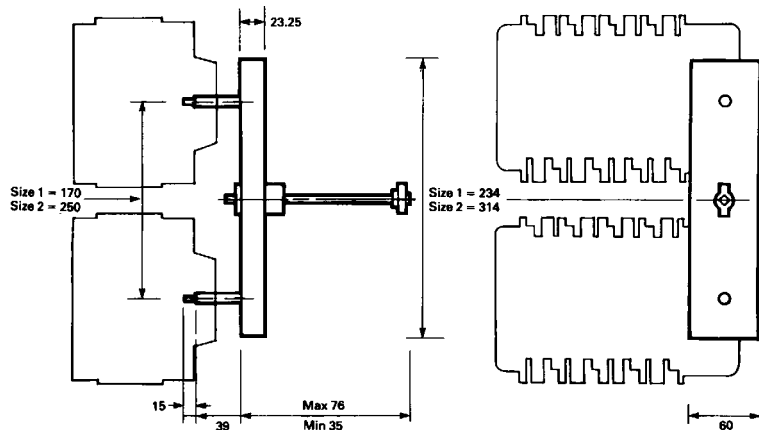


Technical Data

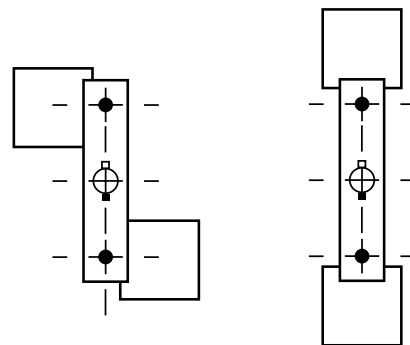
Dimensions in millimetres

DRIVE-LOK CHANGEOVER

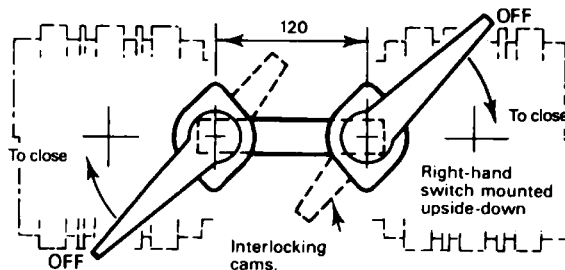
UFS32A1 TO 315



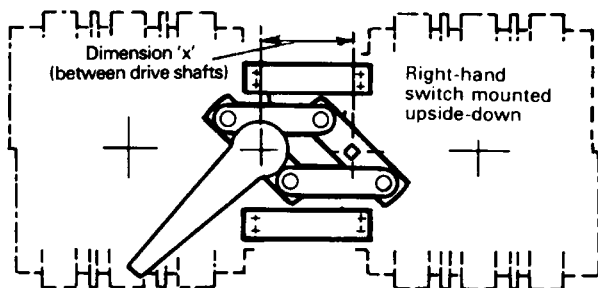
For the UFS200 & UFS315 switches can only be mounted in positions shown below



MECHANICAL INTERLOCKS



PARALLEL DRIVES

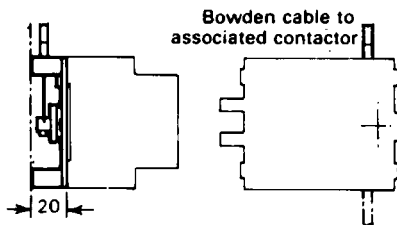


For coupling a pair of -	Dimension x	Switch Operating shaft*
UFS 32A1, 32 & 63	45	6mm square
UFS 100A3 to 315	60	8mm square
UFS 400	60	10mm square

* For coupling switches with dissimilar shafts please apply to Sales Office

RECLOSURE PREVENTERS

UFS32A1, 32 & 63



It is not practicable to give dimensions for all the reclosure preventers; please apply to the Sales Office. The drawings illustrate general arrangements of some of the units.

UFS 100A3 to 400

